



IN PARTNERSHIP WITH



# OUR MISSION

IS TO TRAIN THE NEXT GENERATION TO  
BECOME SCIENTIFICALLY LITERATE,  
INTERNATIONAL TEAM PLAYERS THROUGH OUR  
HANDS-ON FIELD RESEARCH INTERNSHIPS. WE  
BELIEVE OCEAN LEADERS SHOULD REFLECT THE  
DIVERSITY OF OUR BROADER SOCIETY.



A satellite map of Mexico, the Caribbean Sea, and Central America. Overlaid on the map are 14 blue location pins, each containing a white silhouette of a sea turtle. The pins are distributed across the Gulf of Mexico, the Caribbean Sea, and the northern coast of South America. The text 'WHERE WE WORK' is positioned on the left side of the map, with a horizontal line underneath it. Below this, the text 'COASTAL FIELD SITES AND LABS IN MEXICO, THE CARIBBEAN AND CENTRAL AMERICA' is displayed. In the bottom right corner, there is a logo for 'THE SCIENCE EXCHANGE' featuring a stylized blue and green turtle.

# WHERE WE WORK

COASTAL FIELD SITES AND LABS IN  
MEXICO, THE CARIBBEAN AND  
CENTRAL AMERICA



# THE PROGRAM

1. TRAINING
2. DATA COLLECTION
3. ANALYSIS
4. WRITING
5. DISSEMINATION OF RESEARCH



# WE ARE UNIQUE

- CULTURAL IMMERSION
- ENDANGERED SPECIES AND COMMUNITIES BENEFIT
- STUDENT PUBLICATION OPPORTUNITIES
- CAREER GUIDANCE



PARTNERED

WITH

22

INTERNATIONAL

HOST

ORGANIZATIONS

RELEASED

280,000

SEA TURTLE

HATCHLINGS

REMOVED

24,800

PIECES OF TRASH



WE HAVE HELPED

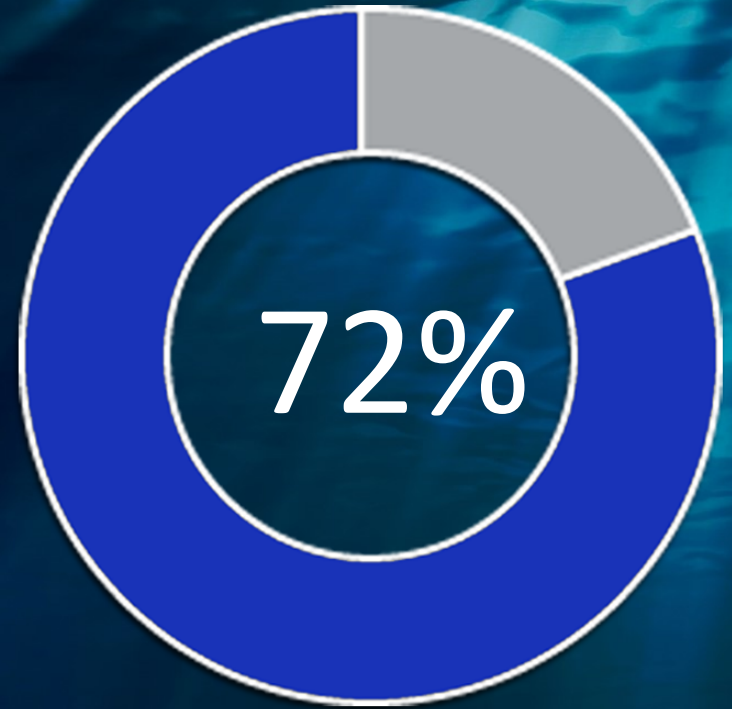
102

INTERNS

48% secondary  
education

MORE THAN

68%



Work in STEM

OF INTERNS PRESENTED AT  
CONFERENCES OR  
PUBLISHED THEIR RESEARCH

# SCHOLARSHIPS FOR UNDER-REPRESENTED STUDENTS





NATURE



CULTURE



FRIENDS



GROWTH



# ACADEMICS

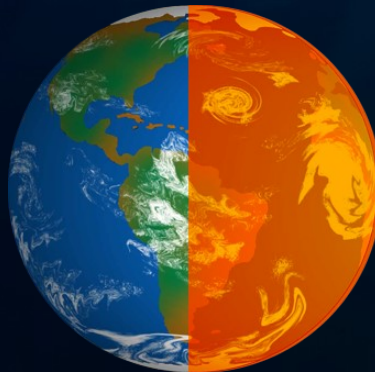
WE OFFER UNIVERSITY CREDITS  
IN MORE THAN 6 SUBJECTS  
FOR FIELD RESEARCH PROJECTS



ENDANGERED SPECIES



CLIMATE CHANGE



POLLUTION



# TOPICS

Mammalian predation on turtle nests

Fish assemblages

Tourist – sea turtle interactions

Global warming and sea turtles

K-12 Education

Artificial incubation of turtle eggs

Marine debris research

Coral reef health

E. coli contamination

Sea cucumbers

Conservation Documentaries

Leatherback bycatch

Turtle nest site selection

Sargassum stranding solutions

Human health

Modeling sea level rise

Hatchling survival and quality

Mammalian health assessment

Business and marketing plans for conservation

Whale sharks

Coral restoration

Seagrass mapping

Avian conservation

# UNIVERSITIES of PAST INTERNS

Hawaii Pacific University  
Stoneybrook  
Oregon State University  
San Diego State University  
San Francisco State University  
Audubon University  
Chapel Hill University  
Antioch College  
Florida International University  
Kutztown University  
Ohio University  
Hawaii Pacific University  
Grand State University  
University of California at San Diego  
Colorado University  
University of California at Santa Cruz  
University of Michigan  
Westminster College  
Rensselaer Poly Tech  
University of North Carolina at Wilmington  
Universität Leipzig, Germany  
Florida International University  
University of Milan, Italy

Instituto Tecnologico de Bahia de Banderas  
University of Missouri  
Bethel College  
University of San Diego  
Florida Atlantic University  
University of Miami  
Cornell  
University of Michigan  
Pitzer College  
Tecnológico de Estudios Superiores de Monterrey  
Universidad de Monterrey  
University of County Cork  
University of Nebraska  
Fielding University  
Roger Williams  
St. Michael's college  
Florida Gulf Coast University  
Florida International University  
Clemson University  
UC Davis  
UNAM San Luis Potosi  
Steven's Point University  
University of Arkansas



## A METHODOLOGICAL FRAMEWORK FOR ASSESSING SEA LEVEL RISE EFFECTS ON A MARINE TURTLE NESTING BEACH: A CASE STUDY AT MAYTO, JALISCO, MEXICO

KARA HIEBERT<sup>1\*</sup>, JAY SHAKER<sup>2</sup>, ISRAEL LLAMAS<sup>3</sup>, MARIANNE FISH<sup>4</sup>  
AND KATHERINE COMER SANTOS<sup>5</sup>

<sup>1</sup>University of Illinois College of Veterinary Medicine, 2001 S. Lincoln Ave, Urbana, IL 61802, USA.

<sup>2</sup>Jonsson Engineering Center #2012 Rensselaer Polytechnic Institute, 110 8th Street, Troy, NY 12180, USA.

<sup>3</sup>Mayto #47 Poblado de Mayto, Cabo Corrientes, Jalisco CP 48400 Mexico.

<sup>4</sup>Independent Researcher, Brentwood Bay, BC V8M 1E9, Canada.

<sup>5</sup>The Science Exchange International Internship Program, San Diego State University, 4414 ½ Kansas St., San Diego, CA 92116, USA.

*Climate change implications for the nest site selection process and subsequent hatching success of a green turtle population*

**Katherine Comer Santos, Marielle Livesey, Marianne Fish & Armando Camargo Lorences**

**Mitigation and Adaptation Strategies for Global Change**

An International Journal Devoted to Scientific, Engineering, Socio-Economic and Policy Responses to Environmental Change

ISSN 1381-2386

Mitig Adapt Strateg Glob Change  
DOI 10.1007/s11027-015-9668-6

**MITIGATION AND ADAPTATION STRATEGIES FOR GLOBAL CHANGE**

ONLINE FIRST



Wann family clearing the fish trap at low tide, with reef flat and mangrove habitat in the background, during an extended cooperative research project on sea turtles in Exmouth Gulf, Western Australia, see pages 3-8 (photo: Jo Wann).

### Articles

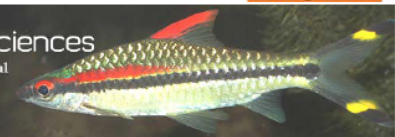
- Editorial: Do Male-Producing Kemp's Ridley Nesting Beaches Exist North of Tamaulipas, Mexico?.....CW Caillouet, Jr.  
Species, Size Classes, and Apparent Growth Rates of Sea Turtles Recorded Associating with a Net and Trap Fishery in Exmouth Gulf, Western Australia: December 1990 - June 1998.....RIT Prince *et al.*  
Tortoiseshell Trade in Sri Lanka: Is Centuries-old Trade Now History?.....RS Rajakaruna *et al.*  
Quantification and Recommended Management of Man-Made Debris Along the Sea Turtle Nesting Beach at Playa Caletas, Guanacaste, Costa Rica.....J Ramos *et al.*  
Anti-fungal Properties of Sea Turtle Cloacal Mucus and Egg Albumen.....AD Phillott & CJ Parmenter  
Natal Homing by an Adult Male Green Turtle at Tortuguero, Costa Rica.....BM Shamblyn *et al.*

JFLS | 2019 | Vol 4(1) | Pp 24-28



**Journal of Fisheries and Life Sciences**

International Peer-Reviewed Biannual Journal  
[www.fishlifesciencesjournal.com](http://www.fishlifesciencesjournal.com)



### Research Article

**Management of a Marine Park: analysis of recreational and illegal fishing pressures on the reef fish assemblage at Los Arcos Reserve in Jalisco, Mexico**

Kirsten Stokes<sup>1</sup>, Kelly Scammon<sup>2</sup>, Darian Double<sup>3</sup>, Katie Toon<sup>4</sup>, Shelli Hendricks<sup>5</sup>, Aldo Alfonso Zavala Jimenez<sup>6</sup>, Karla De La Pena<sup>7</sup> and Katherine Comer Santos<sup>8\*</sup>

<sup>1</sup>Kirsten Stokes Orlando County Public School District, 445 W. Amelia St., Orlando, FL 32801

<sup>2</sup>Kelly Scammon Roger Williams University, One Old Ferry Road, Bristol, RI 02809

<sup>3</sup>Darian Double Ross School of Business, 701 Tappan Street, Ann Arbor, MI 48109

<sup>4</sup>Katie Toon Pitzer College, 1050 N. Mills Avenue, Claremont, CA 91711

<sup>5</sup>Shelli Hendricks Fielding Graduate University School of Leadership Studies, 2020 De la Vina Street, Santa Barbara, California 93105

<sup>6</sup>Aldo Alfonso Zavala Jimenez Centro Universitario de la Costa, Universidad de Guadalajara, Av. Universidad #203, Puerto Vallarta, Jalisco, México 48280

<sup>7</sup>Karla De La Pena Boca Divers, Calle Pelicanos 518, Boca de Tomatlán, Jalisco, México 48292

<sup>8</sup>Katherine Comer Santos The Science Exchange Internship Program, a project of the Ocean Foundation, 1320 19th St NW Floor 5, Washington, DC 20036

# K-12 EDUCATION



THANK  
YOU  
TO OUR  
PAST AND  
PRESENT  
FUNDERS

SDSU FOUNDATION  
SDGE FOUNDATION  
PADI Foundation  
Sea of Change Foundation  
Nannel Foundation  
City of San Diego  
SEAWORLD BUSCH CONSERVATION FUND  
MARISLA FOUNDATION  
WAITT FOUNDATION

Randy and Sue Hawley  
Brian and Patty Dougherty  
Susan Dougherty  
Sue and Bill Koscinski  
Roy and Carol Comer  
Shelley Hendricks  
The Gaffney family  
Gerald Schiller



# ADVISORY BOARD



**Julie Ricks Yunker,**  
Sr. Project Developer Hawaii Gas



**Laurie Silvan, Director**  
Proyecto Fronterizo de Educacion Binacional



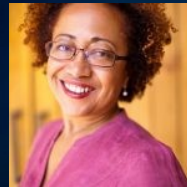
**David Alvarez, CEO of Causa Consulting, LLC**



**Beth Whitman, Ph.D. Assistant Professor**  
Florida International University



**Alberto Abreu, Ph.D Autonomous University**  
of Mexico in Mazatlan



**Janedra Sykes, Arboretta Group**



**Linda Pratt, former**  
Managing Director, Green Cities CA



**Randy Hawyley, retired City Park Ranger**



**Dr. Wallace J. Nichols, California**  
Academy of Sciences



**Heather Lane Chauny, FHI 360 Foundation**

# GET INVOLVED

## DONATE

---

ALL DONATIONS  
ARE TAX DEDUCTIBLE



## FOLLOW US

---



/SeaTurtleInterns



@SEATURTLEINTERN



VISIT OUR WEBSITE FOR MORE INFORMATION

# THE SCIENCE EXCHANGE.ORG

